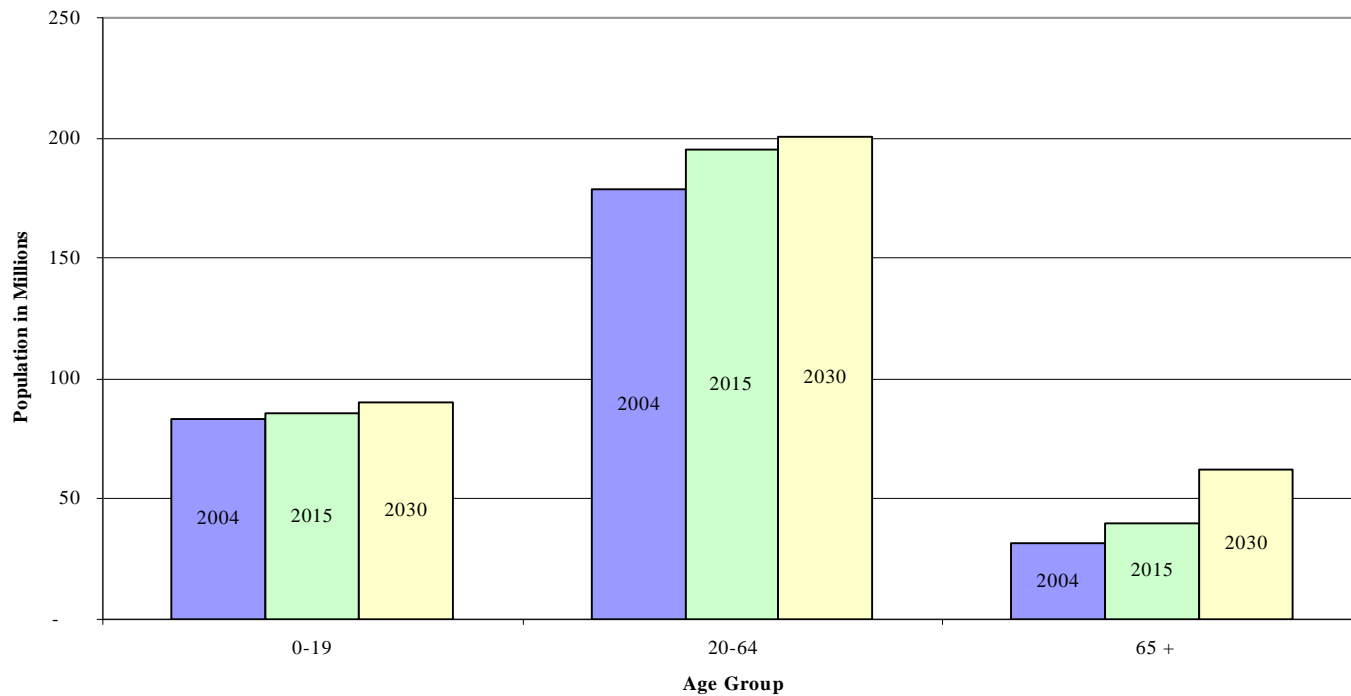


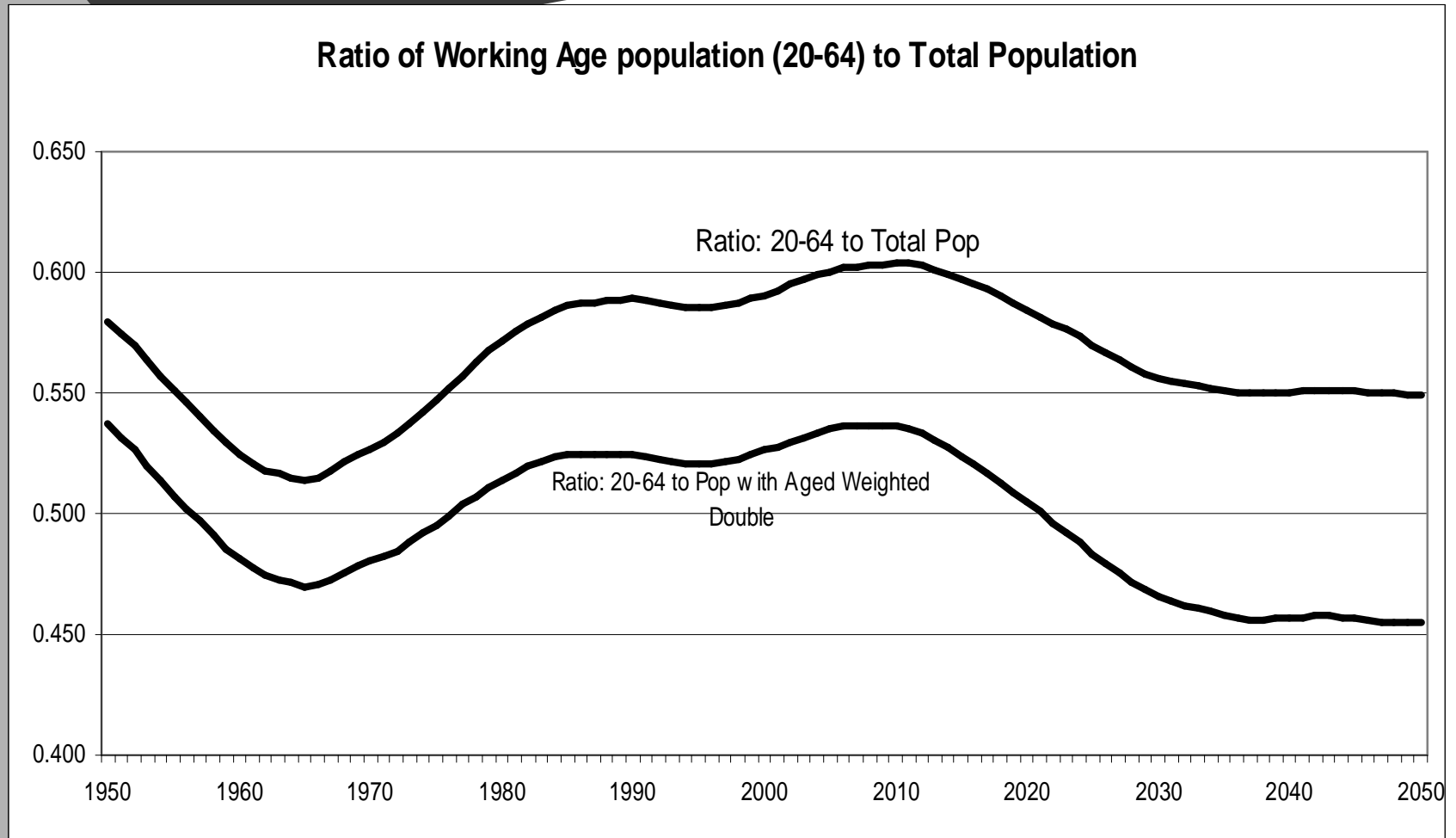
Population and Future Needs for Health Care Workers

Population by age group for selected years

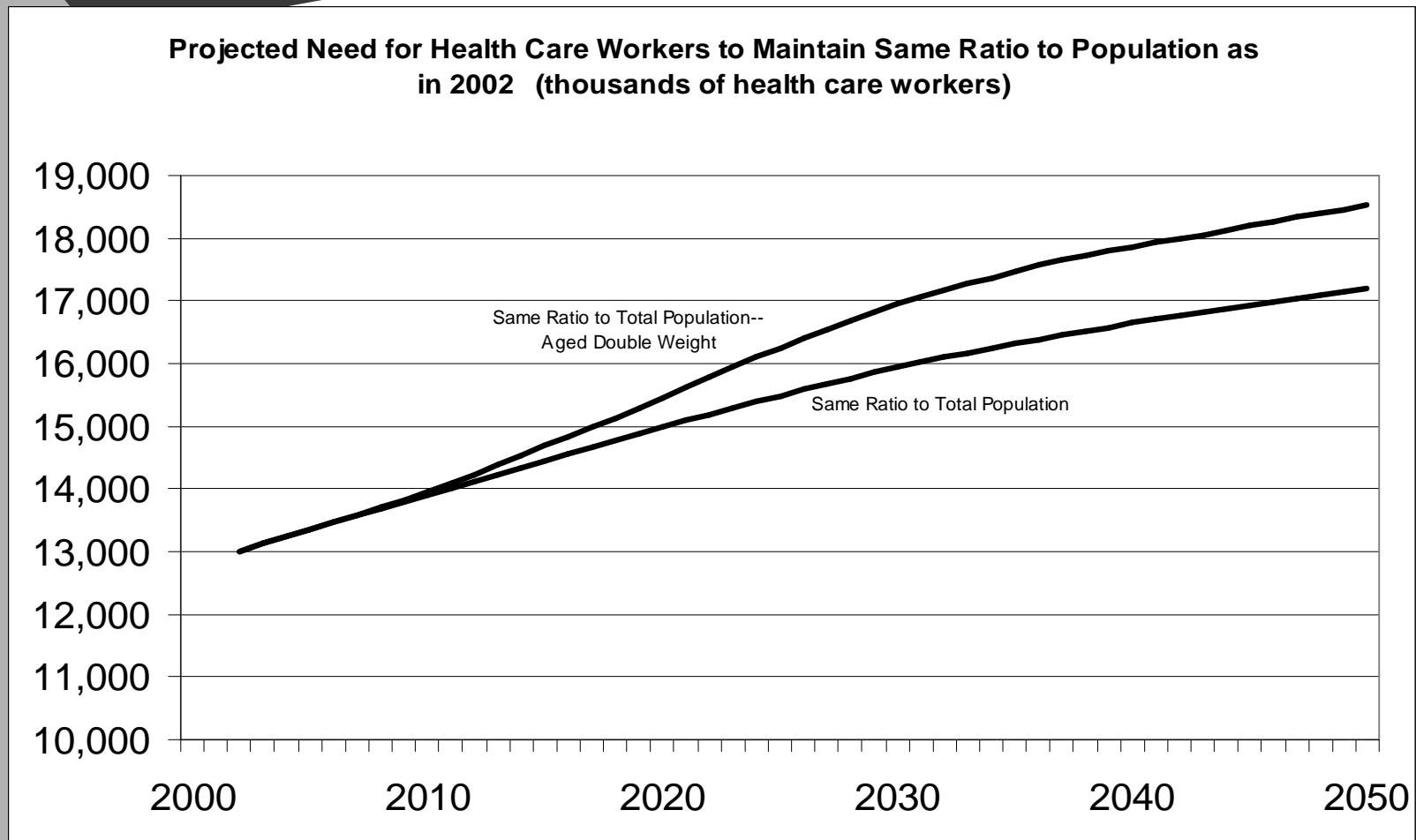
**Population in Specified Age Group
as of Beginning of Year 2004, 2015, 2030**
Numbers is millions, based on intermediate assumptions of the 2006 TR



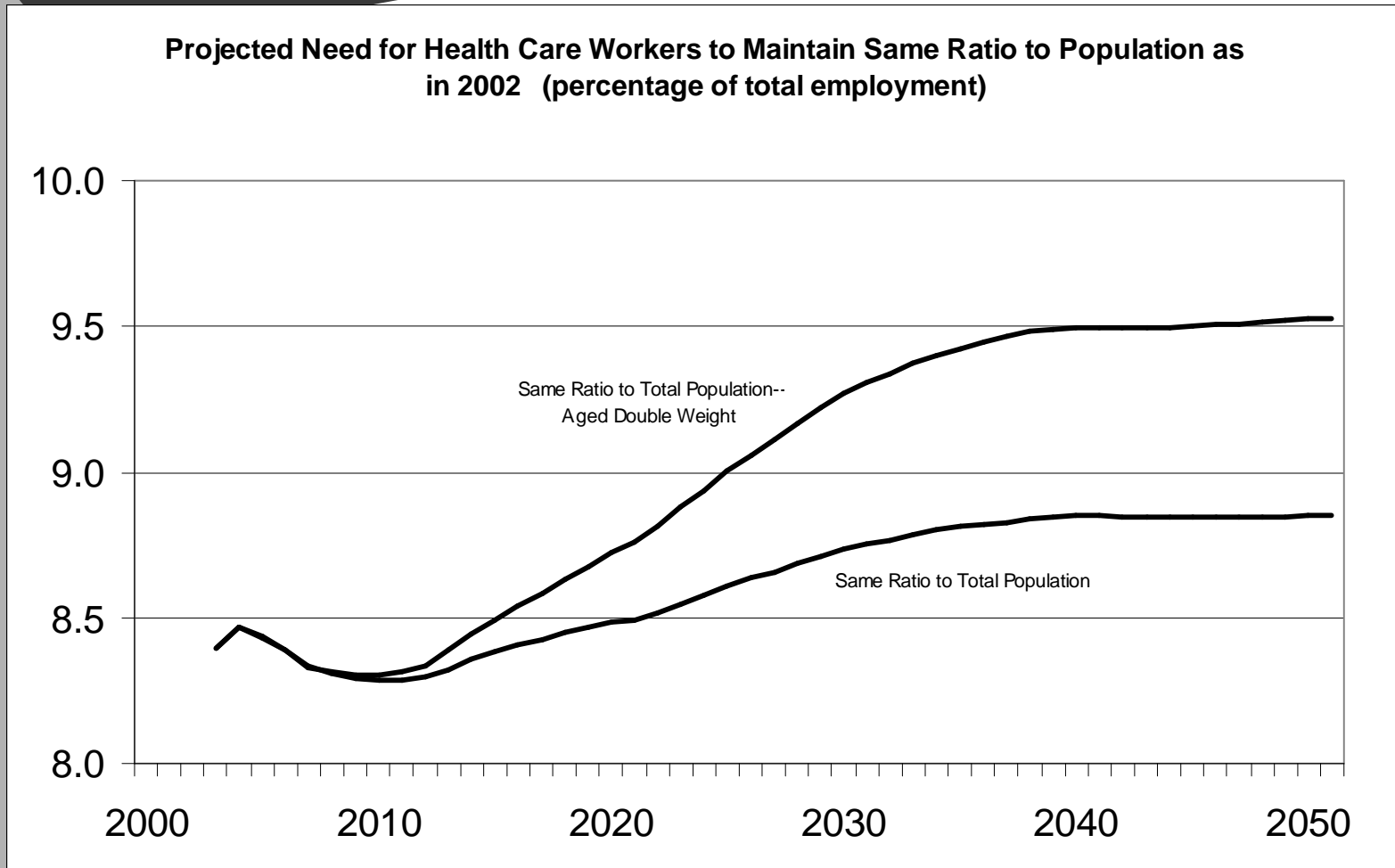
Ratio of working age population (20-64) to health care users (total population)



Increasing Number of Health Care Workers Needed

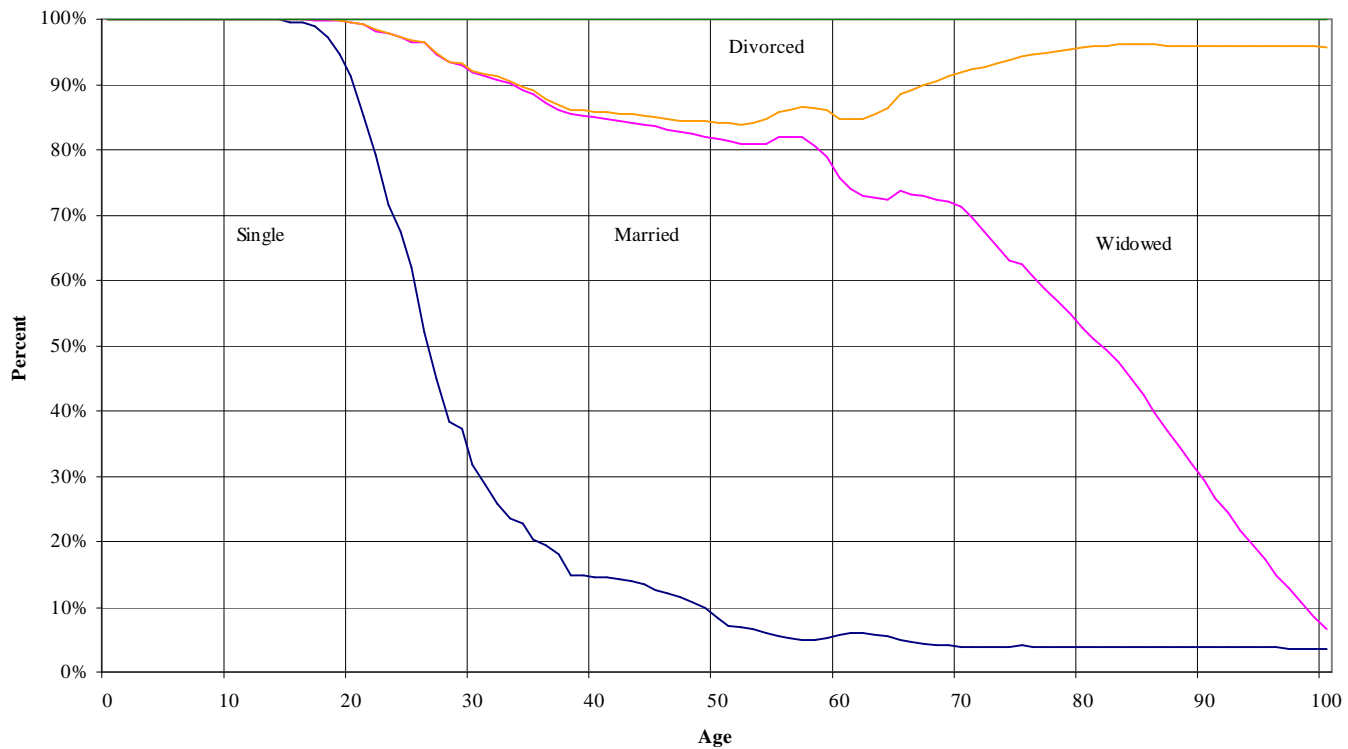


Health Care Workers— Increasing Share of Work Force



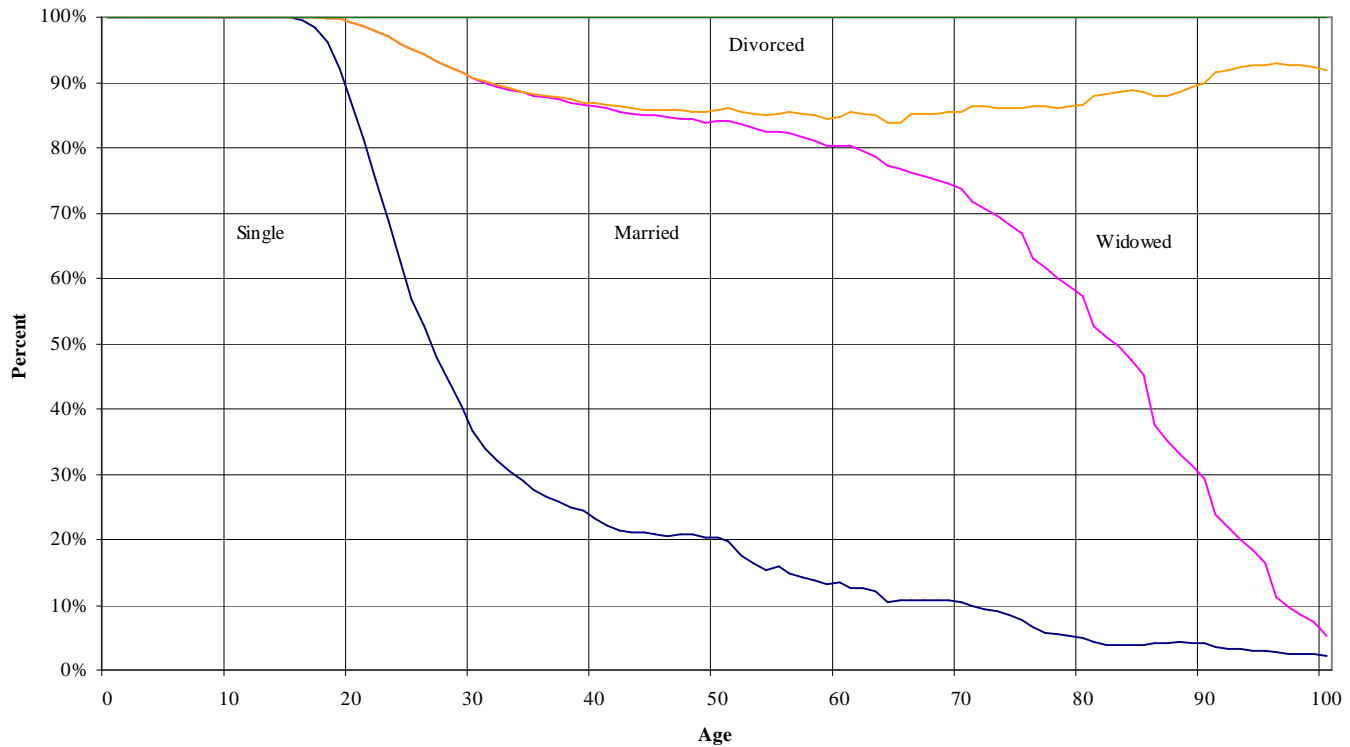
Population by marital status, January 1, 2004

Distribution of the Population by marital Status,
Ages 0 through 100
January 1, 2004 Intermediate Alternative



Population by marital status, January 1, 2030

Distribution of the Population by marital Status,
Ages 0 through 100
January 1, 2030 Intermediate Alternative

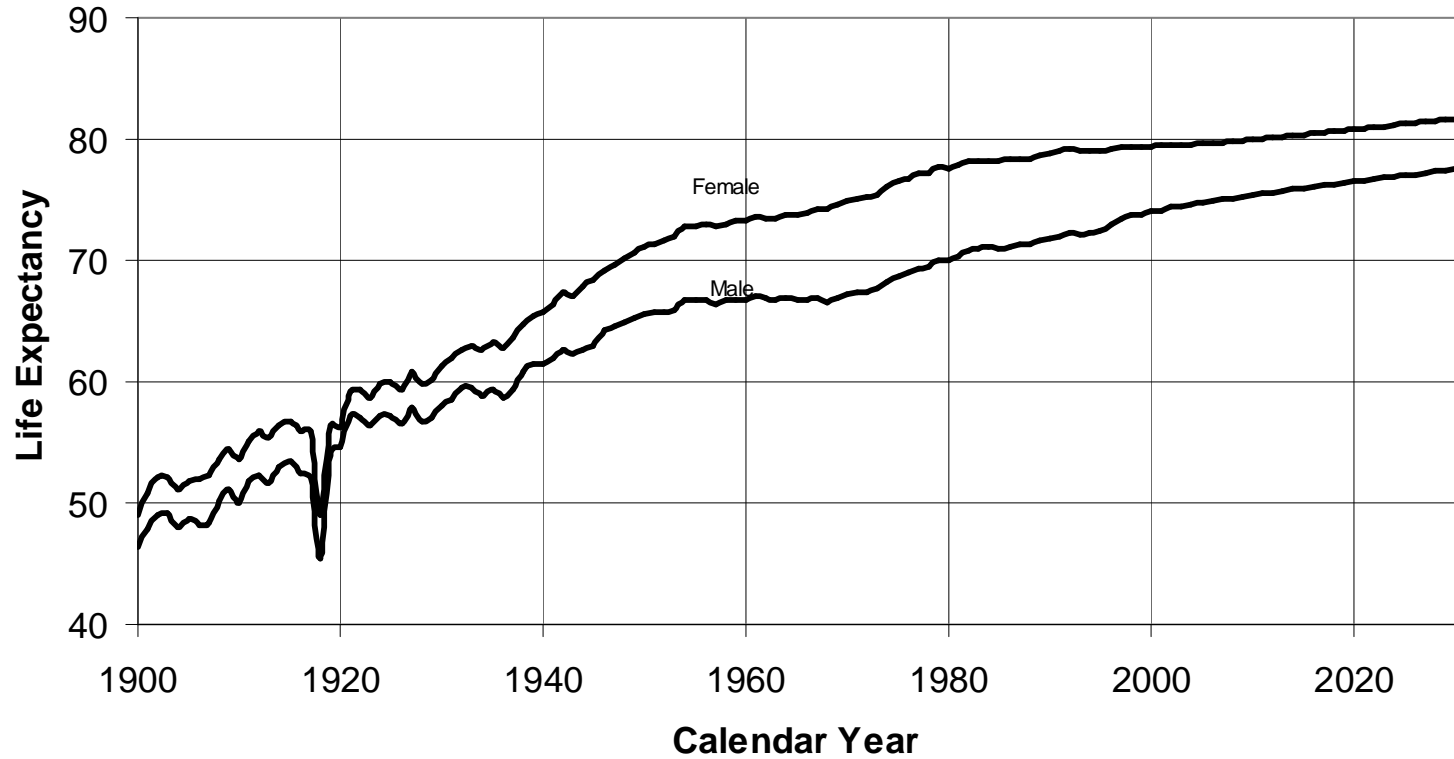




Mortality – historical and projected rates

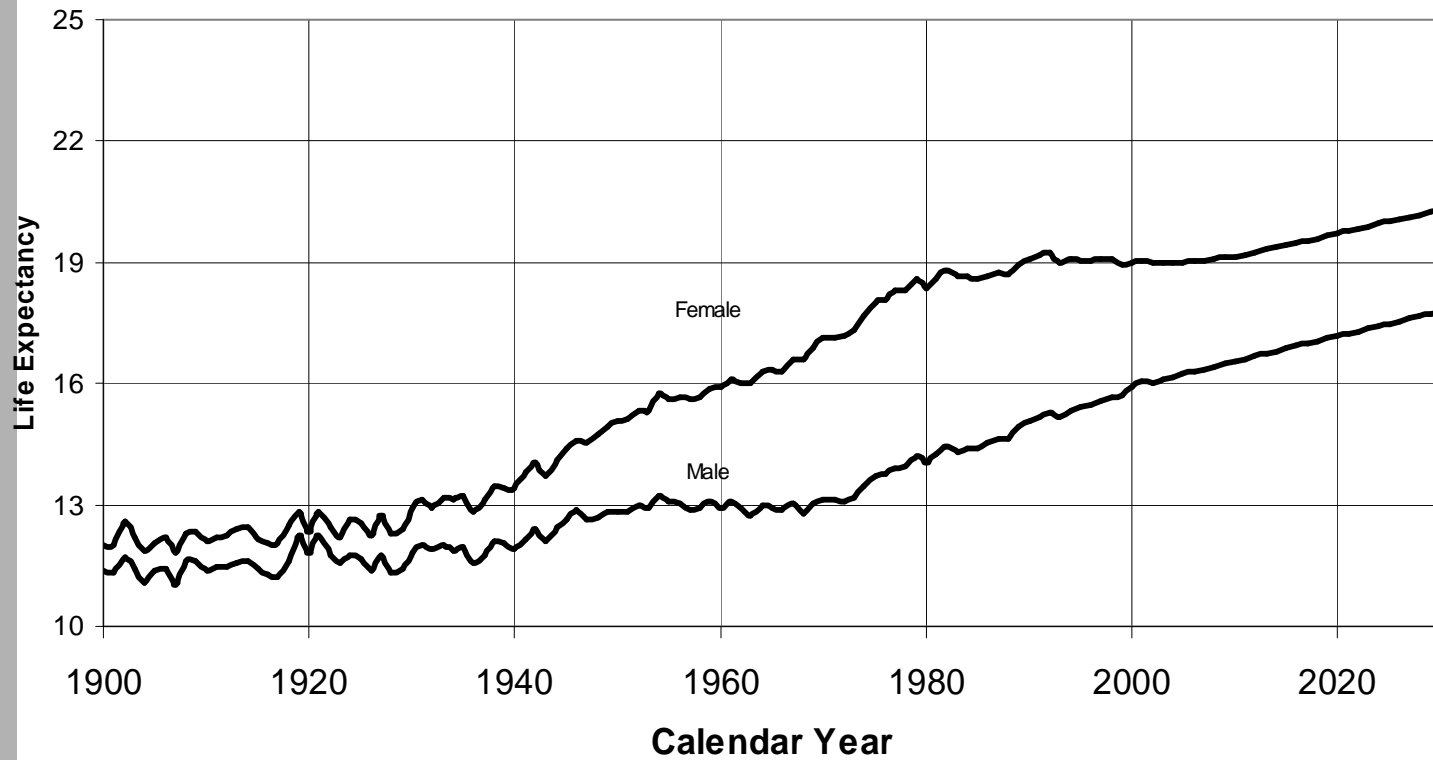
Life Expectancy at Age 0

Life Expectancy at Age 0
by Sex and Calendar Year
(based on Period Tables)



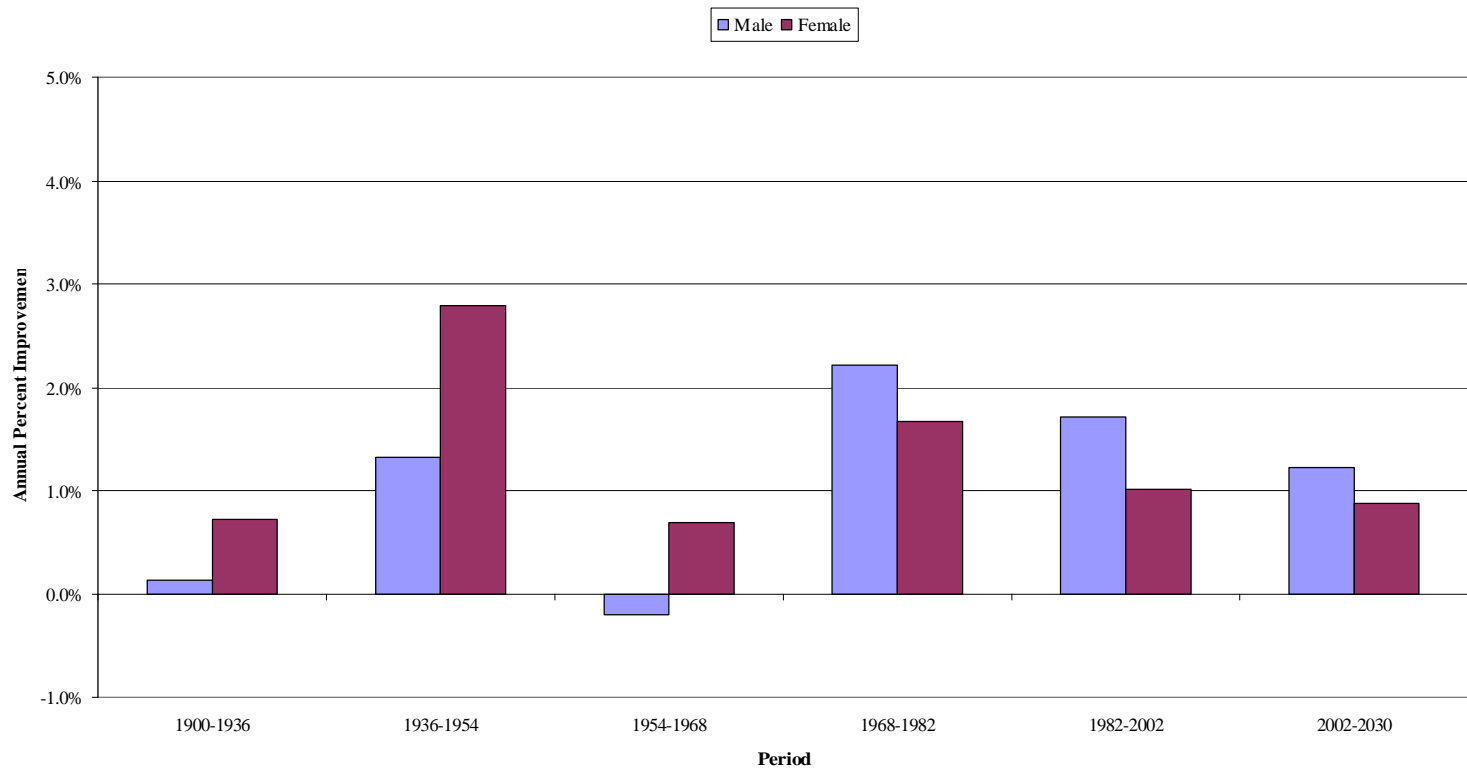
Life Expectancy at Age 65

Life Expectancy at Age 65
by Sex and Calendar Year
(based on Period Tables)

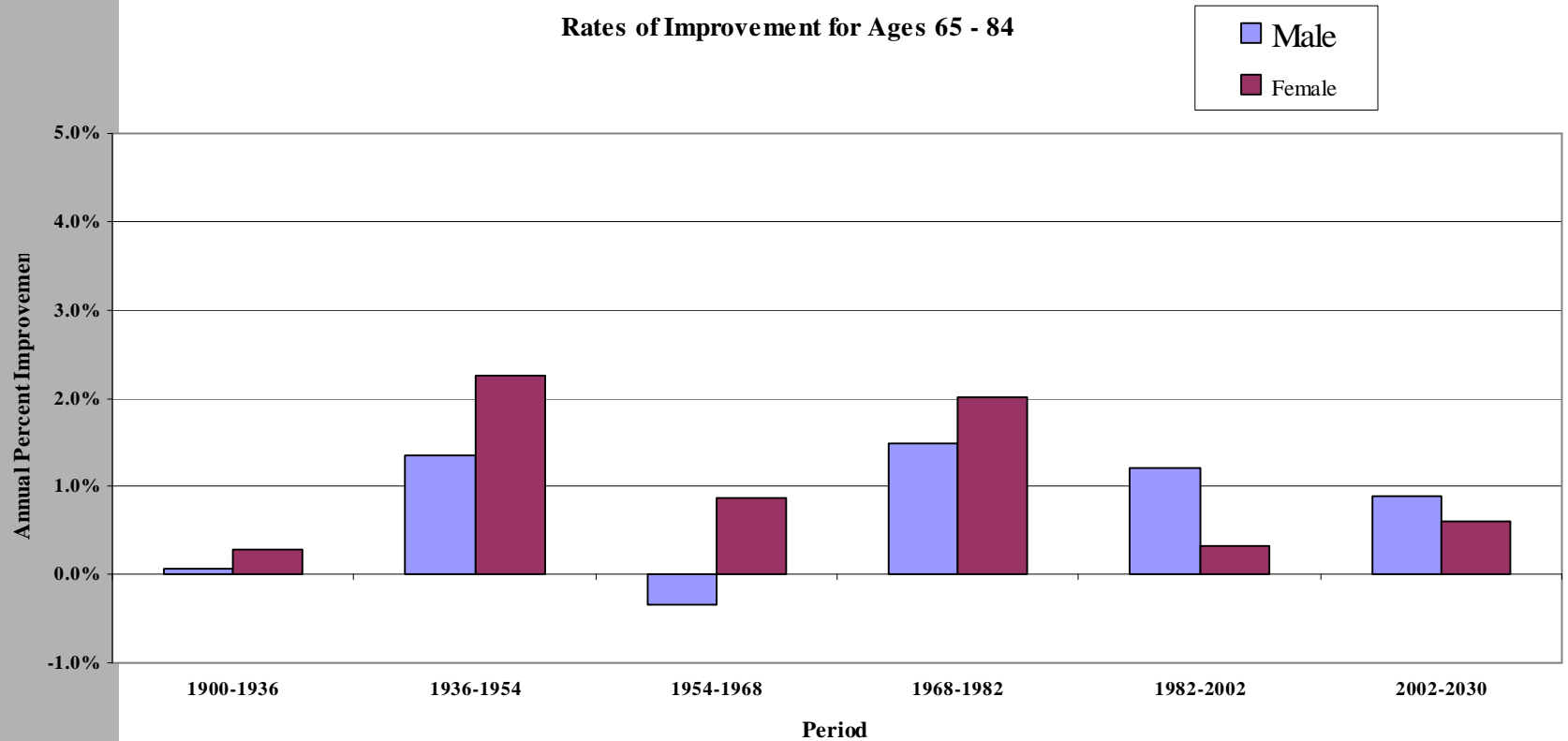


Historical and Intermediate Projections of Average Annual Percentage Reduction in Central Death Rates: Age 50-64

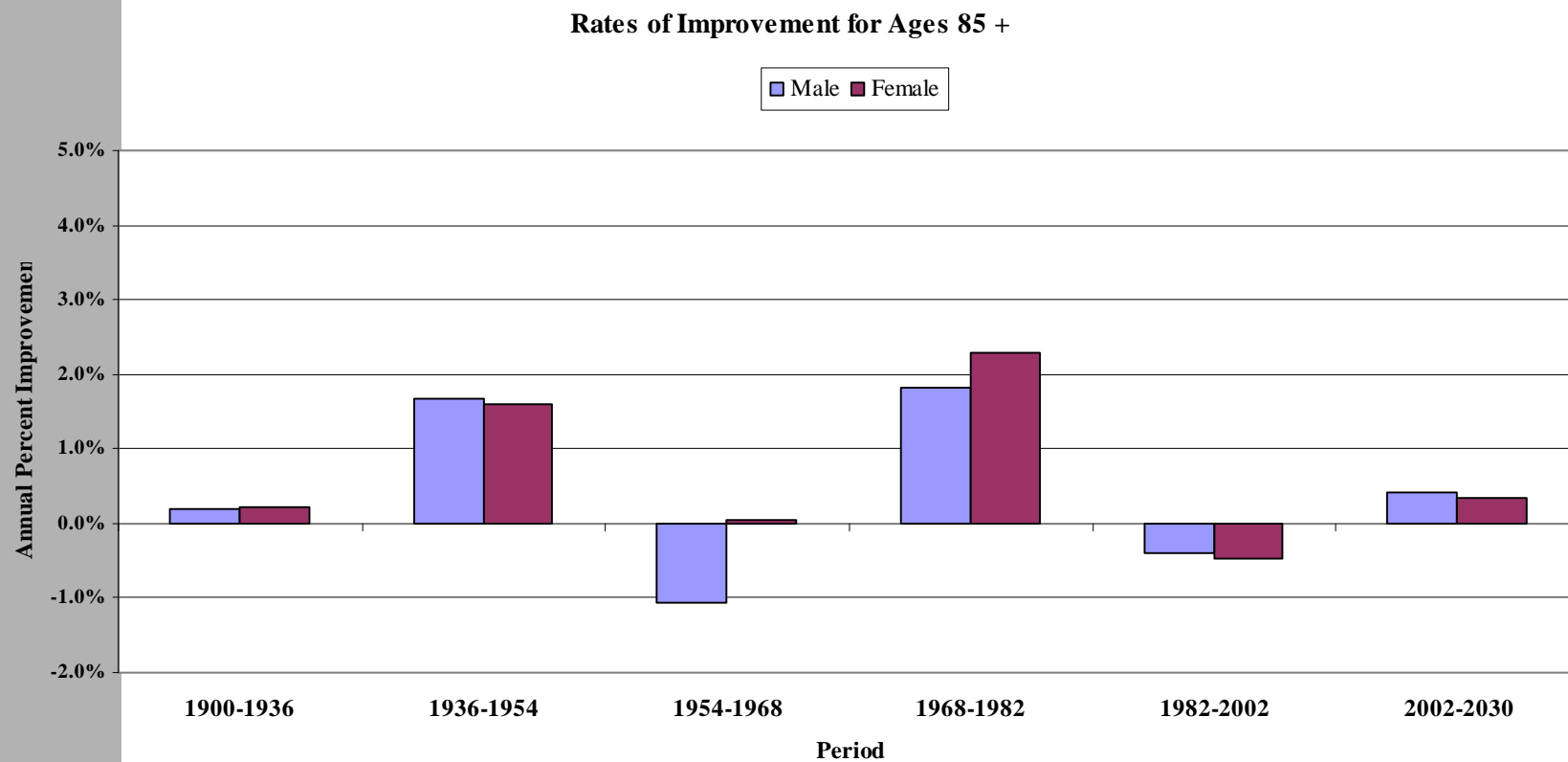
Rates of Improvement for Ages 50 - 64



Historical and Intermediate Projections of Average Annual Percentage Reduction in Central Death Rates: Age 65-84



Historical and Intermediate Projections of Annual Percentage Reduction in Central Death Rates – Age 85+



Ordering by Cause of Male and Female Age-Adjusted Central Death Rates

	1979		2002		2030	
	Male	Female	Male	Female	Male	Female
Heart Disease	1	1	1	1	2	3
Cancer	2	2	2	2	1	2
Vascular Disease	4	3	5	4	6	5
Violence	5	5	6	6	5	6
Respiratory Disease	6	6	4	5	4	4
Diabetes Mellitus	7	7	7	7	7	7
Other	3	4	3	3	3	1

Average Annual Rates of Improvement in Central Death Rates for ages 50-64 by Sex and Cause

	1979-2002		Ultimate	
	Male	Female	Male	Female
Heart Disease	2.53	3.37	2.0	2.2
Cancer	0.93	1.31	0.4	0.4
Vascular Disease	2.05	2.33	1.5	1.6
Violence	1.14	1.55	0.8	0.8
Respiratory Disease	-1.24	1.24	0.6	0.7
Diabetes Mellitus	-1.75	-2.85	0.3	0.3
Other	0.14	0.35	0.9	0.8
Total	1.87	1.05	0.8	0.7

Average Annual Rates of Improvement in Central Death Rates for ages 65-84 by Sex and Cause

	1979-2002		Ultimate	
	Male	Female	Male	Female
Heart Disease	2.49	2.73	1.7	1.8
Cancer	-0.71	0.20	0.5	0.5
Vascular Disease	2.10	2.66	2.5	2.6
Violence	0.38	0.93	1.2	1.2
Respiratory Disease	-3.51	-0.13	0.2	0.2
Diabetes Mellitus	-1.67	-2.67	0.6	0.6
Other	-1.61	-0.49	0.3	0.3
Total	0.43	1.23	0.7	0.7

Average Annual Rates of Improvement in Central Death Rates for ages 85+ by Sex and Cause

	1979-2002		Ultimate	
	Male	Female	Male	Female
Heart Disease	1.08	0.93	1.2	1.2
Cancer	-0.95	-1.13	0.4	0.3
Vascular Disease	1.80	1.66	1.9	1.8
Violence	-0.59	-0.76	0.9	0.9
Respiratory Disease	-3.34	-2.16	0.2	0.2
Diabetes Mellitus	-1.98	-3.29	0.6	0.5
Other	-3.54	-2.40	0.2	0.2
Total	-0.17	-0.20	0.6	0.6