

Oral Health Workforce Workshop

*Designing a new dental team member The
Community Dental Health Coordinator
American Dental Association model*

Institute of Medicine

February 2009

Jane Grover DDS MPH

Dental Director- Center For Family Health

2007 CMS Statistics

- 1 30 million children or roughly 1 in 3 American children were enrolled in Medicaid for at least some portion of 2007
- 1 24 million children are the average monthly enrollment in Medicaid for 2007
- 1 6.5 million children on Medicaid age 2-18 have untreated decay

Federally Qualified Health Centers

Bush Presidential Health Center Growth Initiative

- 1 **1200 new access points in five years**
- 1 **Number of FQHCs: 848 in 2002 to 1,076 in 2007**
- 1 **Appropriations in billions: \$1.34 to \$1.99**
- 1 **75% provide clinical dental services**
 - 1 ***33% able to support a resident, maintain financial viability, and provide experienced leadership***

What is a Community Health Worker?

- 1 Promote health in their community by providing
 - Leadership
 - Peer education
 - Resources to support community empowerment
- 1 Integrate health care information into the community's **culture, language and value system**
- 1 Reduce barriers to health care

Practical Dental Knowledge

- 1 “Root canal”
 - 1 “Periodontal Disease”
 - 1 “Plaque, Tartar, Gingivitis”
 - 1 Pulpotomy
-
- 1 Are these terms part of the national cultural discussion on health?



Oral Health Literacy (Understanding)

Oral health literacy is the degree to which individuals have the capacity to obtain, process, and *understand* basic health information and services needed to make appropriate oral health decisions.

Navigation of Dental Care

- 1 Coordinate dental care
- 1 Reduce dental anxiety
- 1 Register for Medicaid or other appropriate dental care programs
- 1 Arrange transportation
- 1 Support for other necessary dental access issues (fear, etc)

Case for Change in the Dental Workforce

1 Driving factors

- Population growth
- Oral health disparities among the population
- Underserved communities
- Concern with the adequacy of the dental workforce
 - 1 Ability to meet the demands of the expanding population
 - 1 Ability to improve access to and availability to care
- Allied dental professionals contribute to the efficiency, flexibility and productive capacity of the dental team through roles that complement and supplement those of the dentist

VISION

Oral Health Assessment in
a Integrated Care System

Oral Health
Promotion

Prevention of Dental/
Oral Diseases

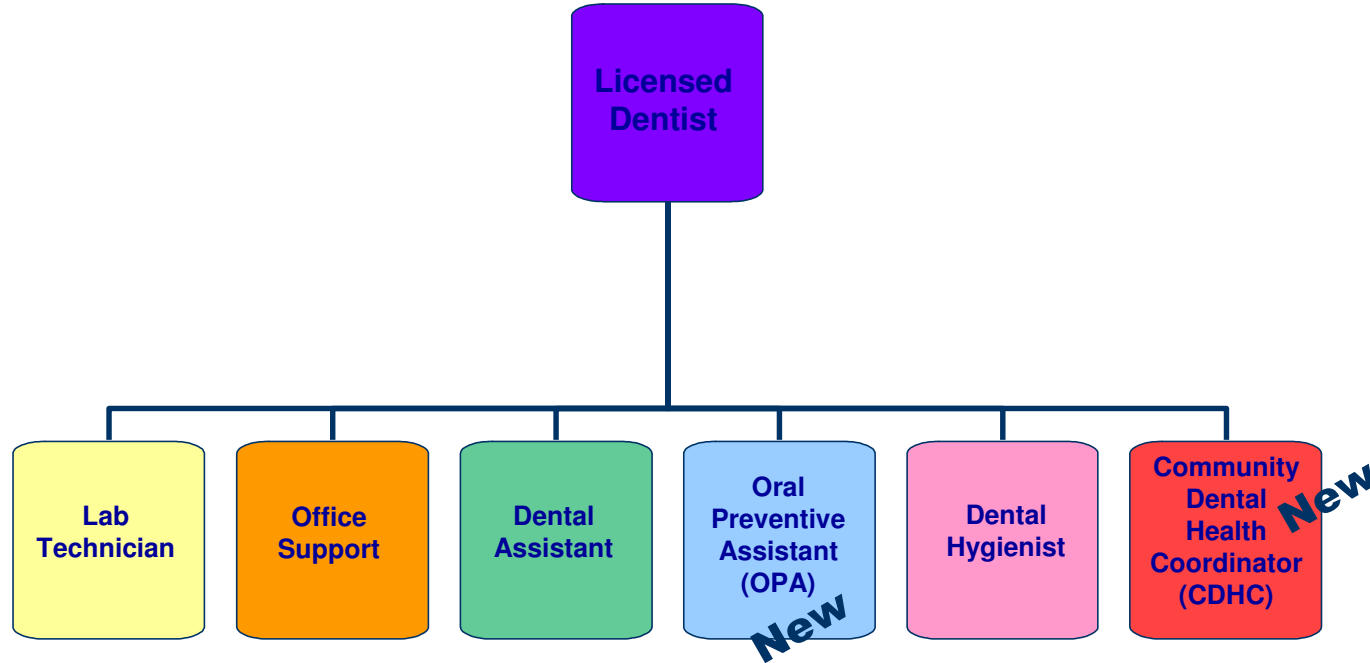
Improve access to dental care
and reduce oral health disparities

Palliative
Care

Patient
Navigation



Description of Workforce Team



Note that lab technicians and office support personnel are not discussed in the Taskforce's proposal but are depicted in the chart to accurately reflect the entire dental team.

Community Based Education

- 1 ***Community Dental Health Coordinator***
- 1 in schools
- 1 community education-WIC/Head Start
- 1 nursing homes
- 1 OB outreach
- 1 making dentists/hygienists more efficient

What is different about a CDHC?

- 1 Being from the community they serve with training in health promotion & behavioral change sets them apart from other dental team members
- 1 Work under remote supervision of a dentist
- 1 Clinical Duties
 - Risk assessment & education
 - Clinical, radiographic and photographic screening
 - Oral hygiene services
 - Fluoride, topical application & promote community
 - Sealants
 - Temporary restoration placement

CDHC Curriculum

- 1 Community health worker & health promotion modules
 - Advocacy and outreach
 - Communication & cultural competency
 - Effective interviewing skills
 - Coordination, documentation & reporting
 - Teaching & learning skills
 - Legal & ethical issues

CDHC Curriculum

1 Dental Skills Modules

- Introduction to dentistry
- Screening & classification
- Prevention of dental caries
- Prevention of periodontal diseases
- Prevention of oral cancer
- Palliative care (by Joe Frencken)
- Financing and payment for dental care

1 Community-based internship

CDHC: Entry Tracks

- 1 Residents of the community who are:
 - 1 High school graduate
 - 1 year didactic + practical training at a CODA accredited program
 - 6-month internship
 - 1 Dental assistants
 - Modules (TBD): < 1 year
 - 6-month internship
 - 1 Dental hygienists
 - Modules (TBD): < 1 year
 - 6-month internship
 - 1 Other healthcare and health service providers
 - Community Health Worker

CDHC: Evaluation of Outcomes

- 1 Increase in patients seen by clinic attributed to CDHC
- 1 Services provided to CDHC patients
- 1 Satisfaction of the CDHC with their tasks
- 1 Improve oral health and quality of life
- 1 Changes in untreated disease in CDHC patients

CDHC: Evaluation of Outcomes

- 1 Cost of the CDHC to clinics and revenues generated by the CDHC
- 1 Number of home visits or community activities generated by the CDHC
- 1 Perception of community organizations who have been contacted by the CDHC

Conclusions-

- 1 New model ready for pilot testing
- 1 CDHC linked to a dentist who will complete care; expands already established programs
- 1 Educational component of CDHC reinforces/elevates oral health literacy
- 1 Oral health integration into total patient care magnified
- 1 Dr. Jane Grover jgrover@cfhinc.org