

# What's Happening in Minnesota?

# The Oral Health Practitioner

## Responding to an Access Need

# **Minnesota Legislature MN Laws 2008, Chapter 298**

**A compromise resulted in establishing statutory language for an Oral Health Practitioner to authorize licensure, qualification, and conditions.**

# Oral Health Practitioner Work Group Charge

Develop recommendations and  
proposed legislation for 2009

<http://www.health.state.mn.us/healthreform/oralhealth.index.html>

# Requirement to Practice in Underserved Areas

- **Populations to be served by the OHP:**
  - Low-income, uninsured, and underserved
  - Dental Health Professional Shortage Areas
- **Authorized to practice in community settings**

# OHP Proposed Scope of Practice and Level of Supervision

- **Scope of Practice**
  - Preventive, Primary Diagnostic, Educational, Palliative, Therapeutic, and Restorative Care
- **Prescribe, administer, and dispense medications**
- **Collaborative management agreements**

# OHP Evaluation Process

## Standard Approaches to Program Evaluation and Outcome Measures

# OHP Proposed Educational Programs

- **Two different models being proposed:**
  - **Metropolitan State University (MnSCU)**
  - **University of Minnesota**

# Issues

- **Economic Climate of Cost Containment**
- **Acceptance by Practicing Professionals**
- **Educational Institutions**
- **Third Party Payors**

# Overcoming the Barriers

- **Educating the Public and Community Clinics**
- **Seeking Support for Education Programs**
- **Discussions with Third Party Payors and State Public Programs**
- **Collaboration, Communication, and Coalition Building**

**"....we have become experts  
in studying distinctions at the  
expense of losing sight of  
connections."**

Stiehl, R., Lewchuk, L. 2002. The Outcomes Primer: Reconstructing the college curriculum. 2nd ed. The Learning Organization, Corvallis, Oregon, page 3.



# **Lessons Learned**

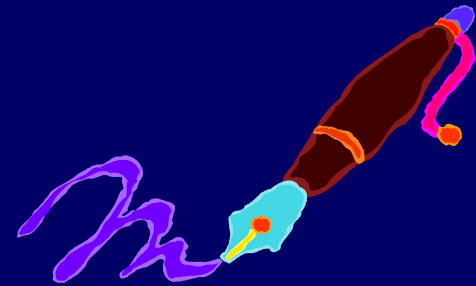
## **As you move forward...**

- **It is about access and the underserved.**
- **Focus on building coalitions and alliances.**
- **Stay grounded in facts, research, and proven experience.**
- **Continuous communication and education.**
- **Maintain your integrity.**

# In Minnesota, the train has left the station...



# Thank you



**Colleen M. Brickle RDH, RF, EdD  
Metropolitan State University and  
Normandale Community College  
(MnSCU)**

**colleen.brickle@metrostate.edu  
952-487-8158**

